

# Alert Utility Software

Multi-Port Monitoring and Routing Software



*"We Deliver Information at the Speed of Light"*

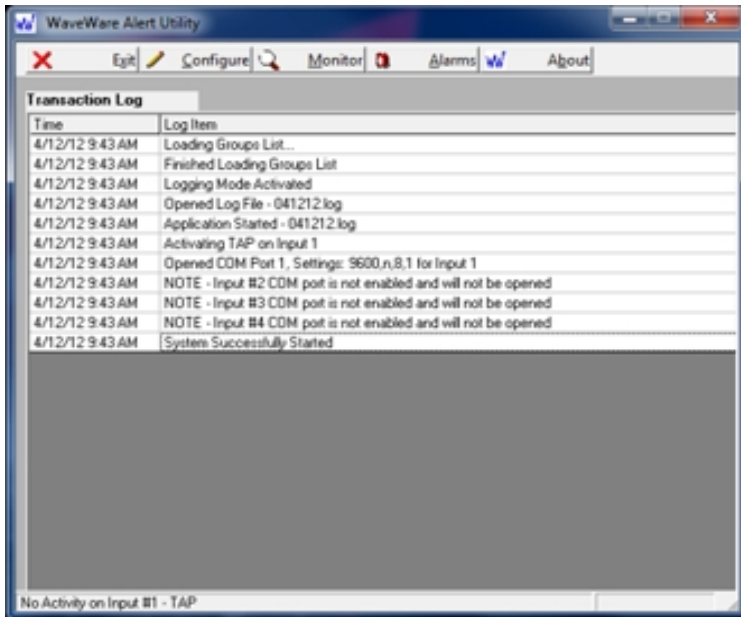
Visit Our Website at:

[www.WirelessMessaging.com](http://www.WirelessMessaging.com)

*Please Contact your Software Dealer for more Information*



P/N= 0212-0007 For Qty. 3 I/O Ports  
P/N= 0212-0010 For each Additional Port



WaveWare Alert Utility allows you to Monitor up to 4 Serial Ports for a Variety of Alarm and Messaging Conditions with Key String Matching, Translation, Repeats and Escalation for up to 1,200 Alarm Points.

### < Main Screen:

Features Include:

- Display Logging of Events in Real Time
- Configuring of all Options and Features
- Monitoring Window to Show Serial Port Activity
- Alarm Window to Show Status of Alarms

Alert Utility Supports Output to Both Individual Recipients and Recipient Groups. Alert Utility combined with Inovonics Wireless Transmitters and WaveWare SPS-5 Series Paging Systems can allow you to Create a Wireless Alerting System for the Assisted Living Marketplace.

9 Functions Except TTS Authorized, 8 Functions Used

**Step 1 - Input Configuration**

Port 1     Port 2     Port 3     Port 4

Enabled     Enabled     Enabled     Enabled

Priority     Priority     Priority     Priority

Input 1 COM Port

Input 1 Serial Port Protocol

TAP     Plain Text     WaveWare

COMP2     Inovonics   

### < Step 1 - Input Configuration:

You have up to 4 Input Ports to work with.

Input Protocols Supported per Port Include:

- TAP
- Plain Text / COMP1
- COMP2
- Inovonics Wireless Monitoring

### PC Minimum Requirements:

**Desktop PC ONLY** with 1 GHz Processor, 10 GB HD and 1 GB Memory, 1 Serial RS-232 Com Port, 1 Ethernet Port and CD-Rom  
WaveWare ONLY Supports the Desktop PC.

*Alert Utility Brochure Continues...Next Page*

# Alert Utility Software

## Multi-Port Monitoring and Routing Software

### Step 2 - Output Configuration

<input type="checkbox"/> WaveWare Paging Client	Configure Paging Server
<input checked="" type="checkbox"/> Internet E-Mail (SMTP)	Configure E-Mail Server
<input checked="" type="checkbox"/> LED Message Board(s)	Configure Message Board(s)
<input checked="" type="checkbox"/> TAP Paging Systems	Configure Paging System(s)
<input checked="" type="checkbox"/> SNPP Protocol	Configure SNPP Paging Server
<input checked="" type="checkbox"/> SpectraLink	Configure Spectralink
<input type="checkbox"/> Serial Port Plain Text	Configure Plain Text
<input type="checkbox"/> Text-to-Speech	Configure Text-to-Speech

### < Step 2 - Output Configuration:

#### Output Protocols Supported Include:

- Direct Serial TAP and IP Port to Paging System
- Multi-Cast
- SMTP (Internet Email)
- SNPP (Internet Paging Carrier)
- LED Message Boards (Wired or Wireless)
- WaveWare Enterprise Messaging
- SpectraLink Wireless Telephones
- Text to Speech

You can Activate Multiple Simultaneous Outputs in Alert Utility.

Alert Utility comes with Qty. 3 I/O Ports Activated. Additional Ports are Available for Purchase.

Configure E-Mail Output

Configure E-Mail Server

SMTP Host: mail.mystmp.com

From Name: Bob

From Address: bob@myemail.com

Subject: Testing AU Email

Message in Subject Line  Priority Status

Authentication: Leave blank if not required

User ID: Password:

Test Mail Server: Idle

To Address:

Log Test Results to SMTPLog.txt

OK

### < Email Output: >

#### Features Include:

- Configuration of SMTP Email
- Add Authentication if Required
- Testing your Configuration

The Email Output Capabilities in Alert Utility use SMTP Protocol to Internet Mail Servers. Alert Utility can be configured to Output Alert Messages to TAP Protocol Equipment such as WaveWare SPS-5 Series Paging Systems in addition to Outputting Alert Messages through LED Message Boards, Paging Carriers via SNPP and Client Based Messaging to WaveWare Enterprise Messaging Software.

### SNPP Server: >

#### Features Include:

- Configuration of SNPP Server
- Testing the Server Configuration

Configure SNPP Server

Configure SNPP Server

SNPP Host: snpp.myaimail.com

Test SNPP Server OK

### Step 3 – Configure TAP Recipients: >

#### Output Protocols Supported Include:

- Direct Serial TAP
- IP Port to Paging System
- SMTP (Internet Email)
- SNPP (Internet Paging Carrier)
- LED Message Boards

TAP Recipients Setup

Name	Output PIN	Routing
Bob	100	Paging System 1
Curtis	101	Paging System 1
Mike	103	Paging System IP 1
Will	104	Paging System 2
Jackie	105	Paging System 1
Jamie	106	Paging System 2
Janet	107	Paging System IP 1

Add Edit Delete Test Exit

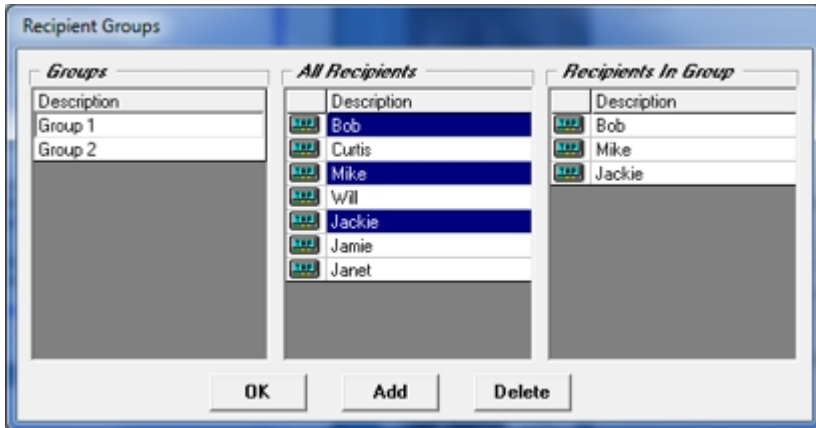
# Alert Utility Software

## Multi-Port Monitoring and Routing Software

### < Step 4 – Configure Groups:

#### Group Configuration:

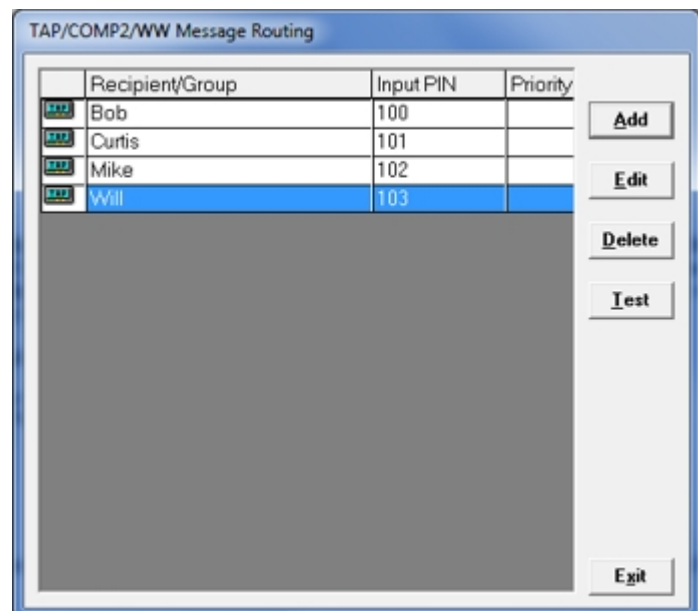
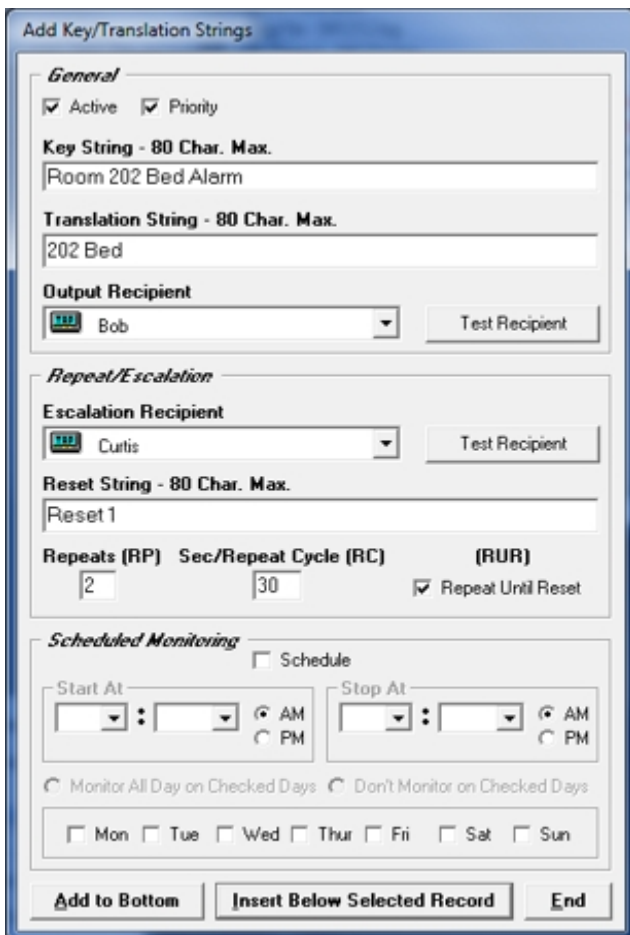
- Name Groups
- Add Recipients to each Group
- Edit Groups – Add or Delete Recipients
- Delete a Group(s)



### < Step 5 – Translation / Escalation / Routing

#### Key String and / or Translation Strings:

- Alert Utility can be Configured to Monitor up to 1,200 Key Strings or Inovonics Transmitters
- Each of the Key-Strings can be Configured to Translate to a Different Output Message
- To Repeat the Message a Fixed Number of Times until either a Reset Event is Recognized or until the Message Repeat Count is met



#### Software Compatibility:

**Desktop PC ONLY** using Windows XP Pro SP3  
or Windows 7 Pro SP1  
No Actual Server or Server OS, Virtual Machines  
or Terminals are Supported

#### Message Routing:

- The Recipient and / or Group
- Assign the Input PIN
- Decide if Priority or not