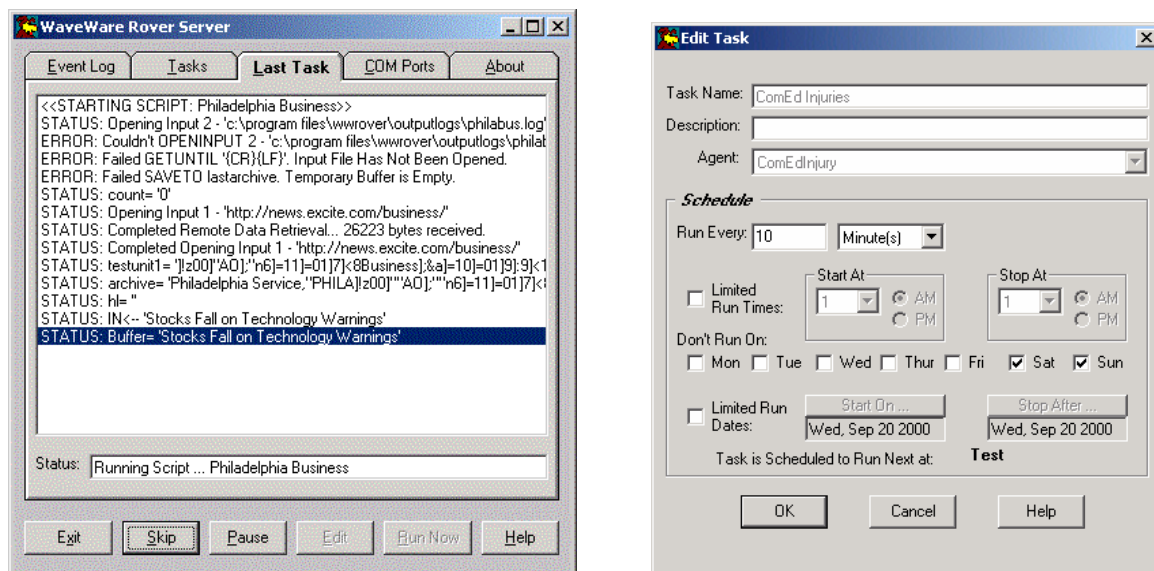


WaveWare Rover Software

WaveWare Rover is agent software that allows you to automatically retrieve data from multiple sources, compile the data into useful and timely information, and deliver the results. WaveWare Rover can retrieve data from internet web pages as well as from files on a local area network. WaveWare Rover can output the data to internet web servers as well as to files on a local network.

WaveWare Rover provides the tools to allow you to setup a completely automated information processing system. This is accomplished through the use of scripted agents that are scheduled for recurring operation via tasks.

You can create an agent script using WaveWare Rover Administrator software. You can edit a task using either Administrator or Server software.



Some of the applications possible with WaveWare Rover software include:

- Translate internet web page HTML/XML content to other forms
- Monitor equipment attached to a PC serial port
- Create regularly updated status reports
- Provide information delivery services
- Monitor for and process files from a file folder

WaveWare Rover uses script commands in agent files to process data and to create useful output information. Data can be retrieved from web pages, from PC serial ports, and from files on a local area network. The WaveWare Rover Server can manage up to 500 TASKSs, 1,000 lines per AGENT SCRIPT, and 100 VARIABLES per script.

Some of the script commands available in WaveWare Rover include:

- Input/Output Commands, such as OPENINPUT, OPENOUTPUT, PRINT, PRINTDATE, PRINTLN, COMINPUT, and COMOUTPUT
- Search/Match Commands, such as COMPARE, FIND, MATCH, and MATCHANY
- Data Extraction Commands, such as APPENDBUFFER, APPENDTO, CLEARBUFFER, GET, GETFIELD, GETUNTIL, and SAVETO
- Flow Control Commands, such as BACKUP, DATEDIFGT, DIFGT, GOTO, IFEOF, LENGT, IFNOTOK, IFOK, SKIP, SKIPANY, SKIPFIELD, SKIPUNTIL, SUB/ENDSUB, and TAG
- Other Commands, such as DATECONV, DECR, DELETE, EXECUTE, DELAY, INCR, REM, and RUNAGENT.