

# USER MANUAL

VHF UHF Transmitter






Models : TE-310 16KEY Transmitter

TE-310 Transmitter is used to page guests or staffs in a limited area, especially suitable for factory, restaurant and hospital. The operation is simple and friendly to keep good communication with your guests and staffs.

There are 19 push buttons for your choice. Each button is able to independently page a single person and also available to page more than one person at the same time, as well. In addition, it has the flash light as a reminder and also can repeat paging the guests/staffs automatically when the one you page has not shown up.

### Transmitter

Be aware at following situations ,which will help to extend the life cycle of transmitter.

-  Don't change transmitter or tamper with its original appearance.
-  Don't put transmitter close to a heat source or in light direct sun.
-  Don't put transmitter in dust , moisture or on uneven surface.
-  Don't soak transmitter into the water.
-  Never operate the device with out the correct Gold Apollo antenna , or a suitable artificial load , connected.

# INSTRUCTION FOR OPERATION:

## 1. Activate paging:

Press any button among these 50 push buttons, the light will flash and enter active mode, then send the signal out.

To repeat paging : In the active mode, it can be programmed to send the same message every 30 sec. or 45 sec, or 60 sec, or 2 minutes, or 5 minutes or continuo

To page more than one person :

More than one button can be activated at the same time to page more than one person.

LED Sign Display :

It's an option on the software.

When the button is pressed, it will activate to send the signal and show the number on the LED Display at the same time. The numbers on the Display will be arranged by sequence, the first number always shows up firstly. , 30 minutes ,

## 2. Stop paging:

In the active mode or Time out mode, pressing the same button again to stop paging, at the same time the repeating and the number on the LED sign will be cancelled.

## 3."Time out" Message display:

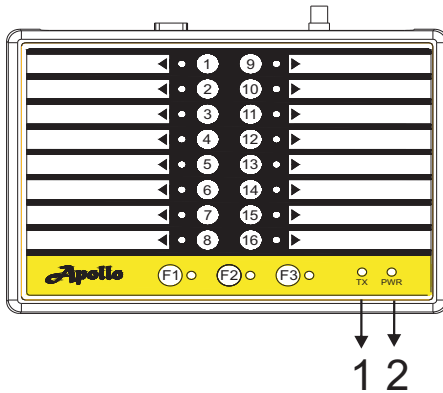
Once the option of "Time Out" message display is enable, the button will be flash after being pressed for a certain time, and will also send the message to the assigned location or person as a reminder

## 4.Heart Beat ( anti-theft):

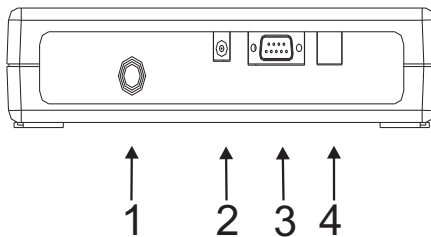
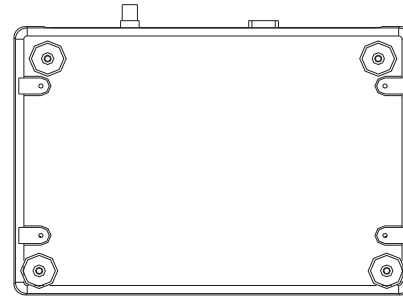
After activate the option of " heart beat ", the transmitter will send heart beat signal every 15 sec, 30 sec, 45 sec, 1 minute, 2 minutes, 4 minutes or 6 minutes. The time-gap is programmable.

# Function \ Location

## Outlook



- 1.TX (Rad) Transmit LED
- 2.PWR(Orange) Power LED



1. Antenna Connect (BNC 50 ohm)
2. Power Connect (8.4V/1.5A)
3. RS232 D-SUB (FEMALE 9PIN)
4. RJ-11 Telephone Jack To Cancer parer.

## System Specifications

1. Frequency range : 147~170MHz,  
450~470MHz.
2. Modulation Type : F S K
3. Channel spacing : 12.5 / 25MHz
4. Output power (ERP): 1W
5. Maximum deviation: +/-4.5KHz
6. Harmonic Radiation : less - 25dBm
7. Frequency stability : 2.5ppm at -10C~60C
8. Output Connect : BNC (F)
9. Current Consumption :  
Standby : 100mA ; Transmit : 400mA
7. Dimensions : 23.2 (W)\*50 (H)\*17(D)
8. Weight : 650g ( No Antenna )

## Instruction for Flash Light:

1. Active mode: when the button is pressed , the light will be turned on to enter the active mode, then the signal will be sent and repeated, as well.
2. Stop mode: Re-pressing the button to turn off the light represented " Stop mode ". Under the active mode or "Time Out " mode, to press the button again can also enter stop mode.
3. Time Out mode: After repeating paging for a certain time, the light of button will be flashing, then go to Time out mode,

# Instruction for programming:

1. Activate screen: to set up basic configurations , such as cap code and frequency from button No. 1 to button No. 19

The screenshot shows the IE310 software interface. At the top, there is a menu bar with 'File', 'Page', 'IoFlash', 'System', and 'About'. Below the menu bar is a toolbar with several icons. The main configuration area includes the following fields:

- Channel Space: 12.5K
- Frequency: 4545000 00Hz
- Port: COM 1
- Baud: 1200 bps
- FunBit: 0 0
- Invert Polarity
- Version: [blue button]

Below the configuration area, there are two tabs: 'Pager DataBase' and 'Config Page'. The 'Config Page' is active and displays a table of memory addresses and their corresponding indices.

Index	Address	Index	Address	Index	Address	Index	Address
1	1234560	2	1234561	3	1234562	4	1234563
5	1234564	6	1234565	7	1234566	8	1234567
9	1234568	10	1234569	11	1234570	12	1234571
13	1234572	14	1234573	15	1234574	16	1234575

Index	Address	Type	Canned	Length	Content
F1	1234600	Alpha	<input type="checkbox"/>	0	
F2	1234601	Alpha	<input type="checkbox"/>	0	
F3	1234602	Alpha	<input type="checkbox"/>	0	



### 3. Configuration Instruction:

**TIME OUT LED OFF** : to enable this option, when it's time out for a certain number, it will enter off mode after the time out message is sent if there is a message preprogrammed.

**BEEP OFF** : to enable this option, this button has no beep sound

**Time Out** : to enable this option represent the button has been pressed for a certain time and not been delete yet, the light of button can be flash or send out the message to an assigned location or person as reminder. It can be programmable for 5 min, 10 min, 15 min, 30 min, or disable.

**-TX Repeat time** to set up time-gap for repeating page before Time out, it can be programmable for 30 sec, 60 sec, 2 min, 5min or disable

TX Repeat time : to set up time-gap for repeating page before Time out , it can be programmable for 30 sec retry , 45 sec, 60 sec, 2 min, 5 min or disable

LED Msg, enable : to enable this option, the number you press will be shown on the LED display.

LED SIGN CAPCODE: to set up the cap code of LED sign display

Head of LED Sign message : the title displayed on the LED Sign

Timeout Msg. Enabl: to enable this option, the preprogrammed message will be sent out when it's time up

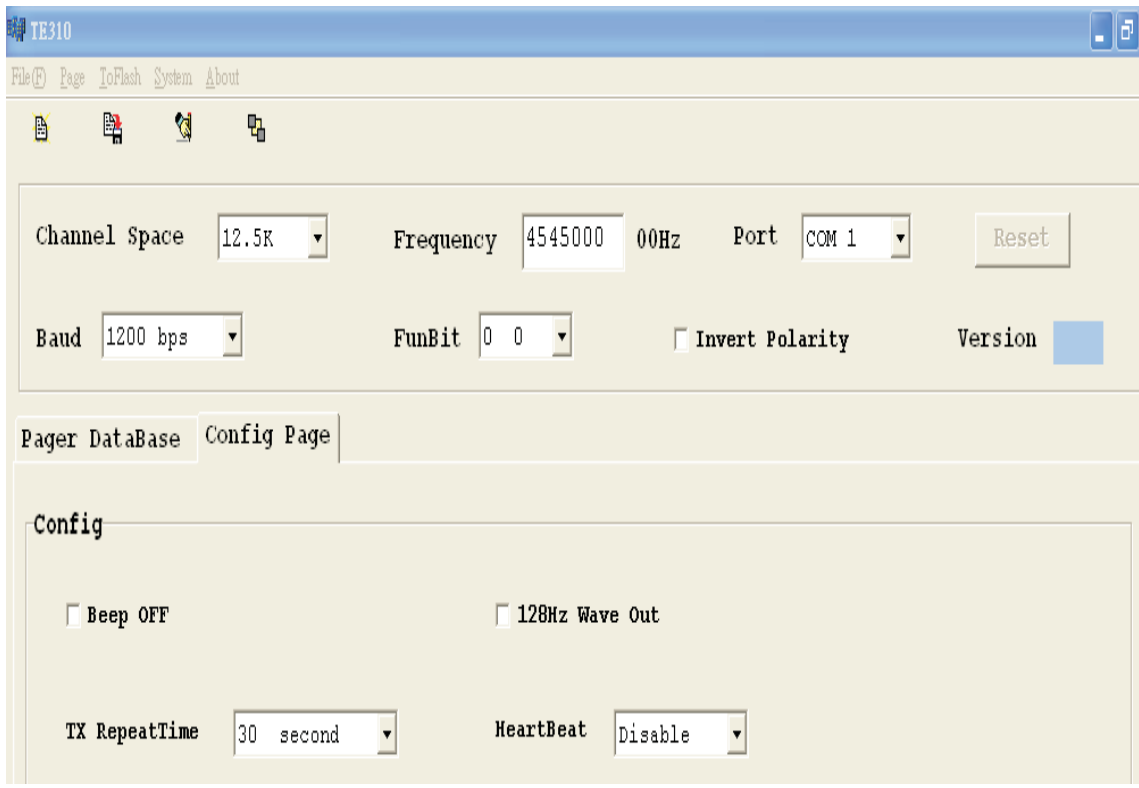
Head of Timeout message: the title displayed before the Time out message.

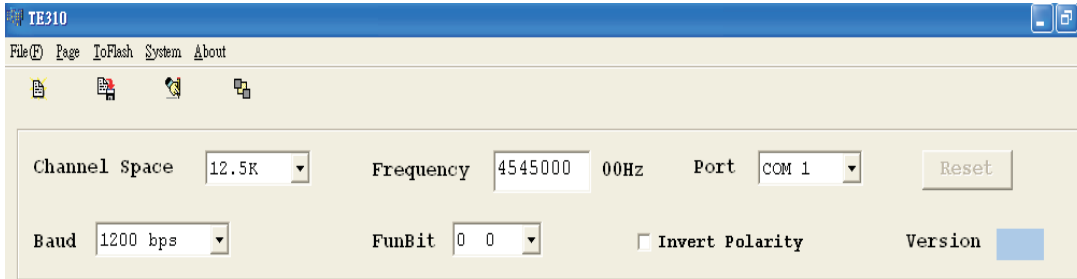
2. To set up the cap codes and type from button No. F1,F2,F3 . butt Please be sure to click " Canned " first to type the content of message.



Index	Address	Type	Canned	Length	Content
F1	1234600	Alpha	<input type="checkbox"/>	0	
F2	1234601	Alpha	<input type="checkbox"/>	0	
F3	1234602	Alpha	<input type="checkbox"/>	0	

### 3.Config :





4. Write: please see the above

In the main menu of the window to execute the command of "To flash\Write" for programming

5. Read: please see the above

in the main menu of the window to execute the command of "To Flash\Read" to read the data.

**Product Name : Transmitter**  
**Models : TE-310**

**GOLD APOLLO CO., LTD.**  
**Rm 1, 3th Fl., No .77, Secretary. 1 , Hsin Tai Wu ., Rd., Hsi-**  
**Chih Hsien, Taiwan, R. O. C.**  
**Tel : 886-2-2698-8888**  
**Web site : [http\\www.apollo.com](http://www.apollo.com)**