

SPS-5 v8 – Com Port Settings

You may be required to configure the **Com Port Settings** in the paging encoder to establish the appropriate operating mode and serial communication parameters. Com Port Settings are Programmable using the **v8** Encoder Setup Software.

This is done using the **WaveWare v8 Encoder Setup** Software that you can find on the WaveWare **Product Support CD** (Shipped with each **v8** Paging System) or from our **Website** at: <http://www.wirelessmessaging.com/wavewaresw.html>

Your **WaveWare v8 Paging System** typically communicates with a PC or other host system via RS-232 at 9600 Baud, 8 data bits and 1 stop bit. You can configure the paging system for other serial communication parameters.

The available operating modes include **TAP Verbose**, **TAP Non-Verbose**, **COMP1**, **COMP2 Verbose**, **COMP2 Non-Verbose**, **Scope** and **WaveWare Protocols**.

- **TAP and COMP2 Verbose** means that the Paging System will include Human Readable Messages after each Paging Request is received.
- **WaveWare and Scope** are **Proprietary** Single Serial Command Strings that includes Cap Code, Function Code, RF Data Rate, and Message Values. Either protocol can be used as either **Simplex** or **Duplex Operation**.
- **COMP2** means that the Data Formatted as **PagerID<CR>Message<CR>** or **GroupID<CR>Message<CR>** will cause the Message to be delivered to the Specified Pager ID or Group ID.
- **TAP Non-Verbose** reduces the Paging System Human Readable Response to 3-Digit Numeric Codes. In the COMP2 Non-Verbose mode the response is reduced to none at all.
- **The Non-Verbose** modes are useful in situations where you want to minimize the Serial Data throughput requirements which tend to allow Paging Messages to be delivered more quickly, or to achieve compatibility with legacy host systems.
- **COMP1** means that any Data received on the Serial Port will be sent to all Pagers in Group 1 stored in the Pager Database. Refer to **Appendix H** for a definition of the **COMP1 Protocol**.

Refer to **Appendix A** for a definition of the **TAP Protocol** and **Appendix I** for a definition of the **COMP2 Verbose and Non-Verbose Protocols**.

Independent of Operating Modes, you can configure the Serial Port **Baud and Parity**, and you can configure whether **Hardware or Software Flow Control** is used.

To get to the Com Port Settings in the **Paging Encoder v8 Setup Software**, on the Main Screen click on “**Settings**”.

See Fig. 1.

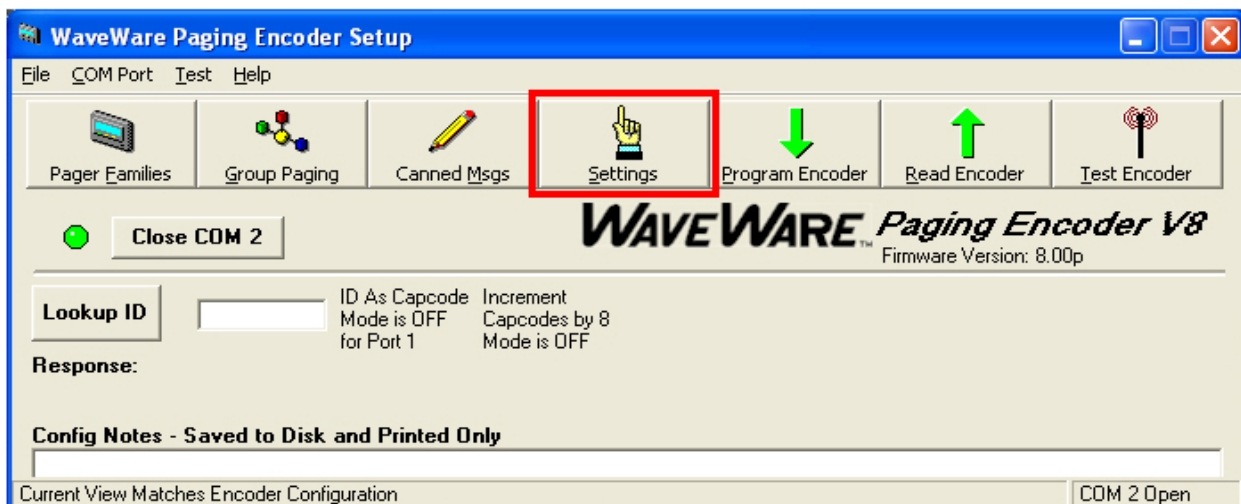
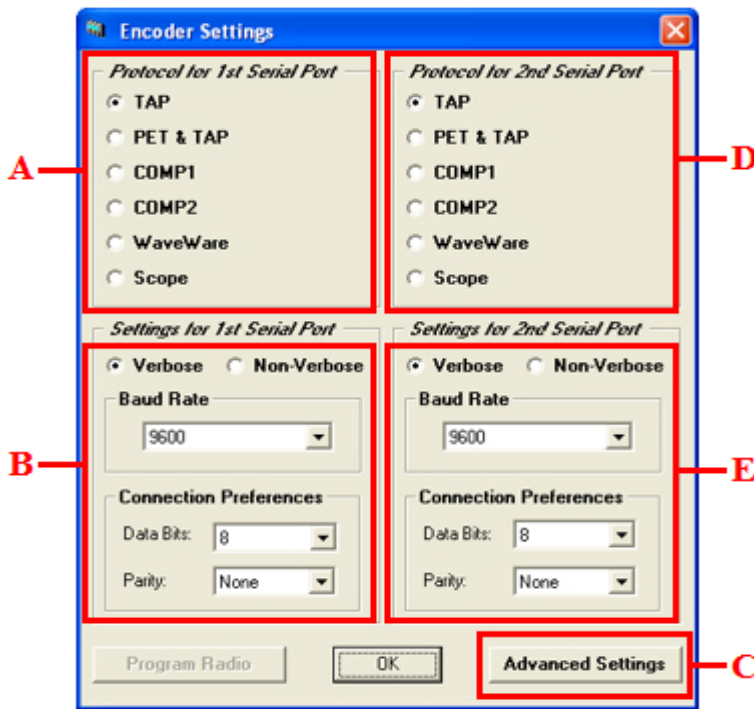


Fig. 1 (v8 Encoder Setup, Main Screen)

Com Port Settings Continued on next page...

To Configure “Settings”, See Fig. 2.



For Each Com Port...

A and D:

Choose the “Protocol”.

B and E:

Choose the “Settings”.

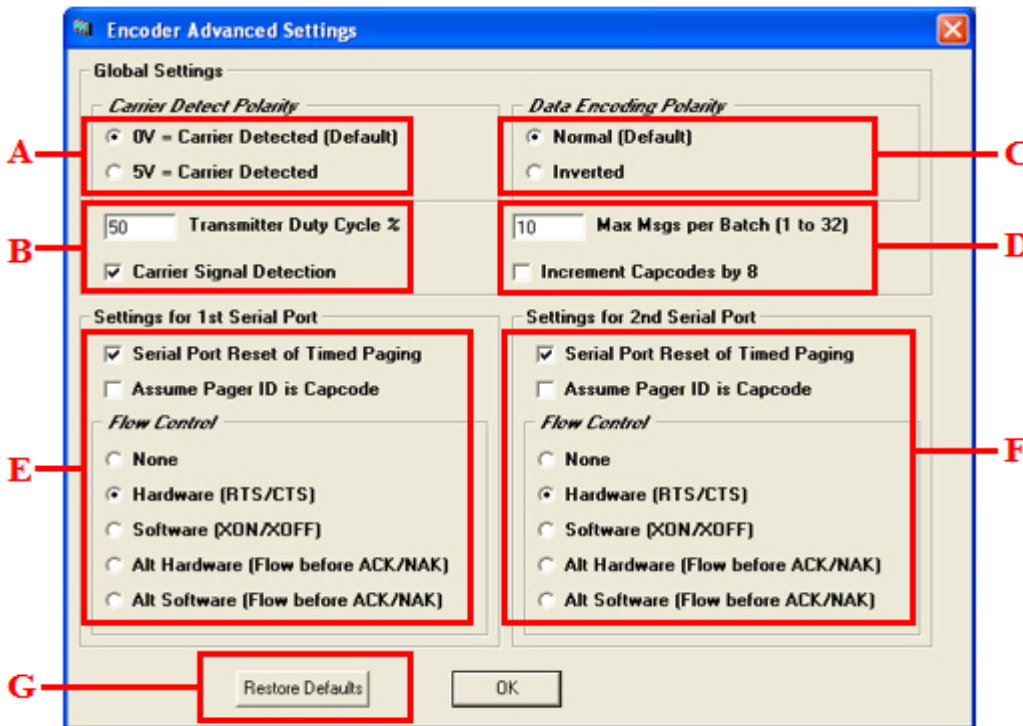
C:

For Features and Settings.

Click Button and User ID= Maint or maint.

Fig. 2 (Encoder Settings Screen)

To Configure Advanced Encoder Settings, See Fig. 3.



A, B, C and D: Global Settings and affect BOTH Com Ports.

G: “Restore Defaults” is also Global and will “Reset” Both Com Ports.

E: 1st Com Port Settings.

F: 2nd Com Port Settings.

“Defaults” are as Shown.