



WaveWare Technologies, Inc.

"We Deliver Information at the Speed of Light"

WaveWare Software



Software Overview

This Document is a General Registration Information Guide for All WaveWare Software.

For More Detailed Information, Refer to each Software Product's own Manual.

WaveWare Software Requires a Registration/Activation Key to allow it to be Fully Functional.

Desktop PC Requirements:

The Minimum Hardware Requirements for use with WaveWare Software are:

Desktop Model Windows PC with...

1+ GHz Processor

10+ GB Hard Drive

1+ GB Memory

1+ RS-232 Serial Com Port

1 Ethernet Port

1 CD-ROM

Please Note: More RS-232 Serial Com Ports may be needed depending on the Application Requirements.

Important and Required Information is Next

Important Information

WaveWare Support “Strongly Recommends” Requesting a Fully Functional “DEMO” Activation Key to Start.

This is in case the customer (the end user) finds that the PC they chose is “Not” the one they will use. This could be for many different reasons: Not happy with the Performance, or decide to use a different PC and/or maybe in a different location within the building or during testing of the Software the PC just wouldn't work properly as required or it died during testing, etc.

Requesting a DEMO Key will “Save” the Customer a Permanent Key, in case it is needed sometime in the Future, as ONLY 2 Activation Keys are allowed per Installation, per Purchase.

This is of Course, Only a Suggestion. You may by-pass the Demo/Trial Key if Requested to do so.

Please Note:

It is Suggested that Both the Dealer and the Customer Save a Copy of the Software and the Registration Key.

We Do NOT Support Multiple User Log-ins.

Required Information

The Dealer who sold the Software and the Customer (End User) Company Name are “Required” Information when sending a PO to order our software and when Sending the “Request” a Key or the Activation Key will be Delayed.

All Information Must match the PO on Record for this Application, or it will Delay Activation/Registration.

Any Questions, please contact Technical Support at: 1.800.373.1466 or support@wirelessmessaging.com

Registration and Activation Instructions are Next

Installation from our CD is first, then Installation from our Website Follows.

NOTE:

After Requesting a Trial/Demo Key (and after Testing the Software and the PC), you are ready for the Permanent Key, simply Repeat the Process and state that all is Satisfactory and you would like the Permanent Key.

The above statement assumes that you didn't by-pass the Trial/Demo Key.



WaveWare Technologies, Inc.
"We Deliver Information at the Speed of Light"



WaveWare Software

Installation and Activation

This Section is to Explain How to Install and Register/Activate our Software.

Downloading from the WaveWare Software CD

If you received a WaveWare Software CD, place it into your PC's CD-Rom Drive and when the CD Auto-Starts, Click on the Software Icon on the Main Screen for the Software Purchased. See Fig. 1

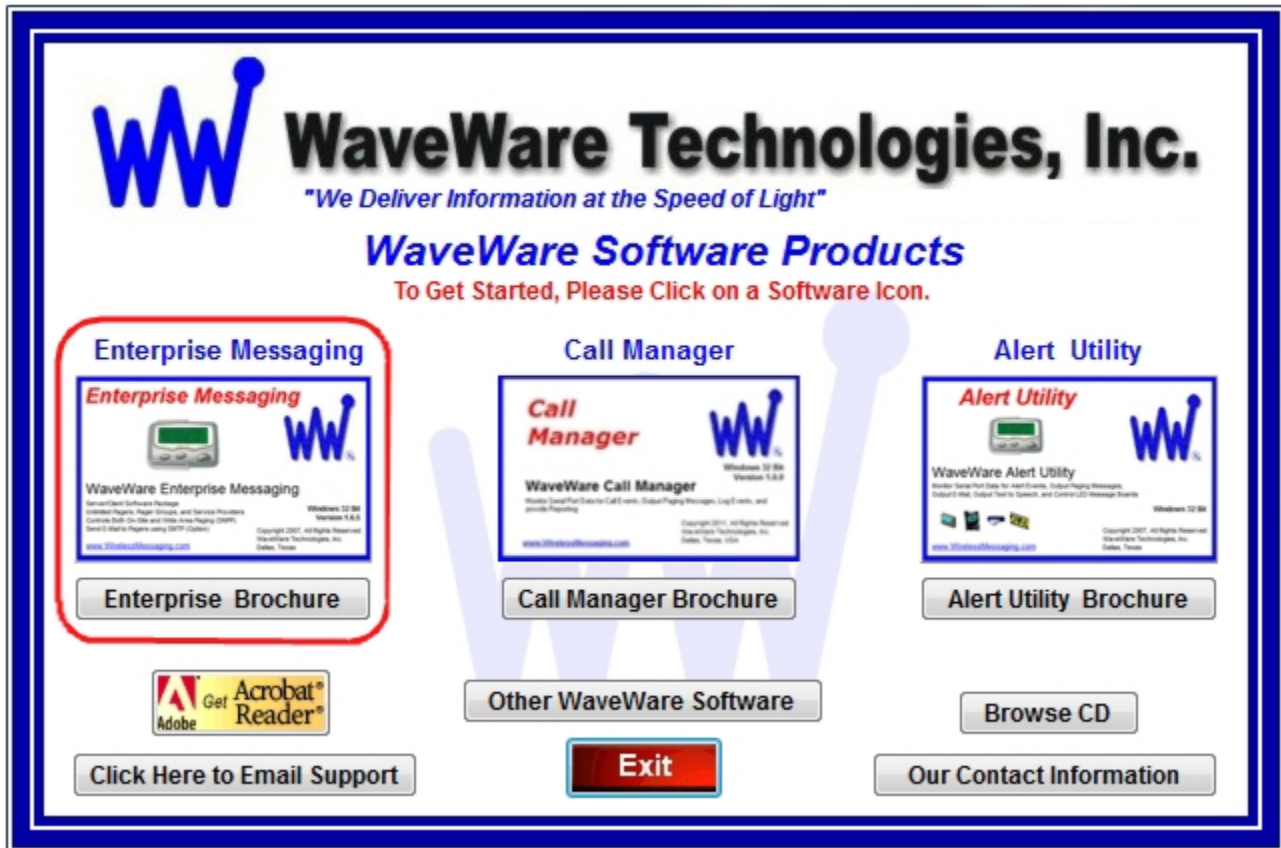


Fig. 1 – (For this Instance, Enterprise Messaging)

On the following screen, Click on the Server and Client Buttons and Save the exe files to your computer. Fig. 2
 After Clicking, choose to "Save" each Portion of the Software to a Folder on the PC or Chose "Install".



Fig. 2

Choose to "Save" the Software to a Folder on the PC or "Install" to start the Installation. See Fig. 3A -3B



Fig. 3A



Fig. 3B

Check for Available Com Ports

This Utility will Search the PC for Serial Com Ports and give the Availability and Status of each.

If you are not sure of the com ports installed on the PC...

Click the “Check PC Com Ports” Button, then Click Run. See Fig.4



Fig. 4

Downloading WaveWare Software from the WaveWare Website is next.

Downloading WaveWare Software from our Website

(In this Example: WaveWare Enterprise Messaging Software)

Download the Enterprise Messaging Software (Both the Server and Client) from the WaveWare Website and save to a Folder on the Desktop PC. Website: <http://www.wirelessmessaging.com/wavewaresw.html>

Be sure to Download and Save both Software Portions to a Folder and keep for any Future re-installs.

It is highly "Recommended" that you "Keep a Copy" of the Purchased Software in a Safe place.

NOTE: Without the Originally Purchased Software "Version", you may need to "Re-Purchase" the Software.

Registering/Activating Enterprise Messaging Software

After Installing the Software, Start the Software for the First time.
You should see the "Register WaveWare Enterprise" Icon in the Center of the Screen.
Click, on the Register Icon.

See Fig. 5

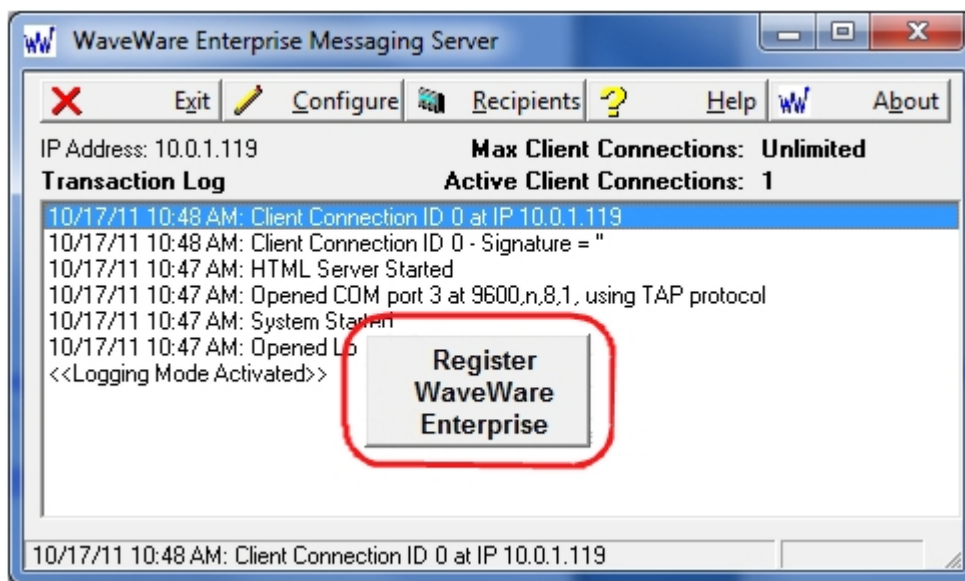


Fig. 5 – (Register Icon will vary per Software Package Purchased)

If the above Screen with the Register Icon is seen, after Clicking the Icon, Jump to Page 8.

If you Do Not see the Register Icon, Please Continue to the next Page to Register the Software.

On the main Screen, Click on the “About” Button, as Shown below. See Fig. 6

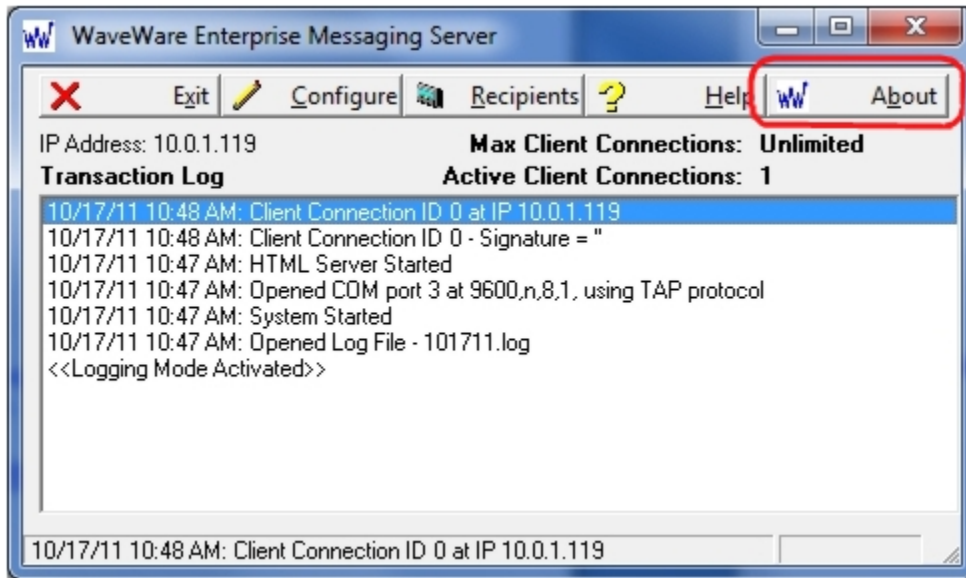


Fig. 6

Next, Click on the Registration Button. See Fig.7



Fig. 7

See next page for Instructions for Registering our Enterprise Messaging Software.

Generating the “Request Key” for WaveWare Software

After Clicking the Register Icon or Registration Button, Click the “Generate Request Key” Button. See Fig. 8



Fig. 8

Follow the Instructions on the Server Request Key Screen to send the “Request Key” to WaveWare. See Fig. 9

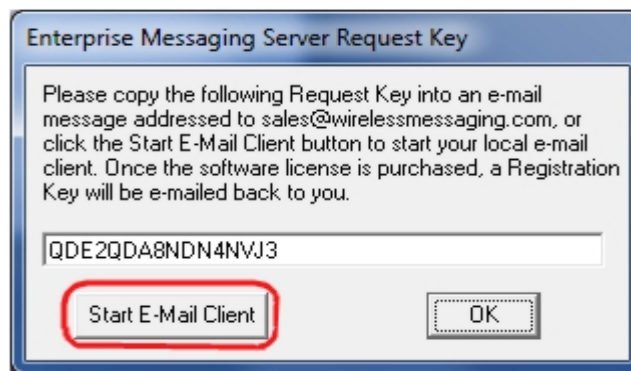


Fig. 9

If you have Internet and Email capability on the PC, Click on the “Start E-Mail Client” Button. See Fig. 9

IMPORTANT NOTE: The “Activation Key” will **ONLY** work on the Computer that Generated the Request Key.

Please proceed to the Next Page for instructions to send the Generated Request Key to WaveWare.

Email the "Request Key" for the Software to WaveWare

After you Click on the "Start Email Client" Button...(Fig. 9)

This should start and open an E-mail Client Window with the "Key" in the Body of the E-Mail, and our "Sales" Email Address in the "To: Window" and the "Software Name" in the Subject Line. As shown below in Fig. 10.

If you Do Not have Internet and Email on the Desktop PC, then Copy and Paste the Request Key into Notepad or a Word Document and then Copy that file to a Flash Drive and take to a PC that does have Email capability.

Please, be sure to "ADD ALL" of the 4 Required Information Fields to the Email, as shown below. See Fig. 10

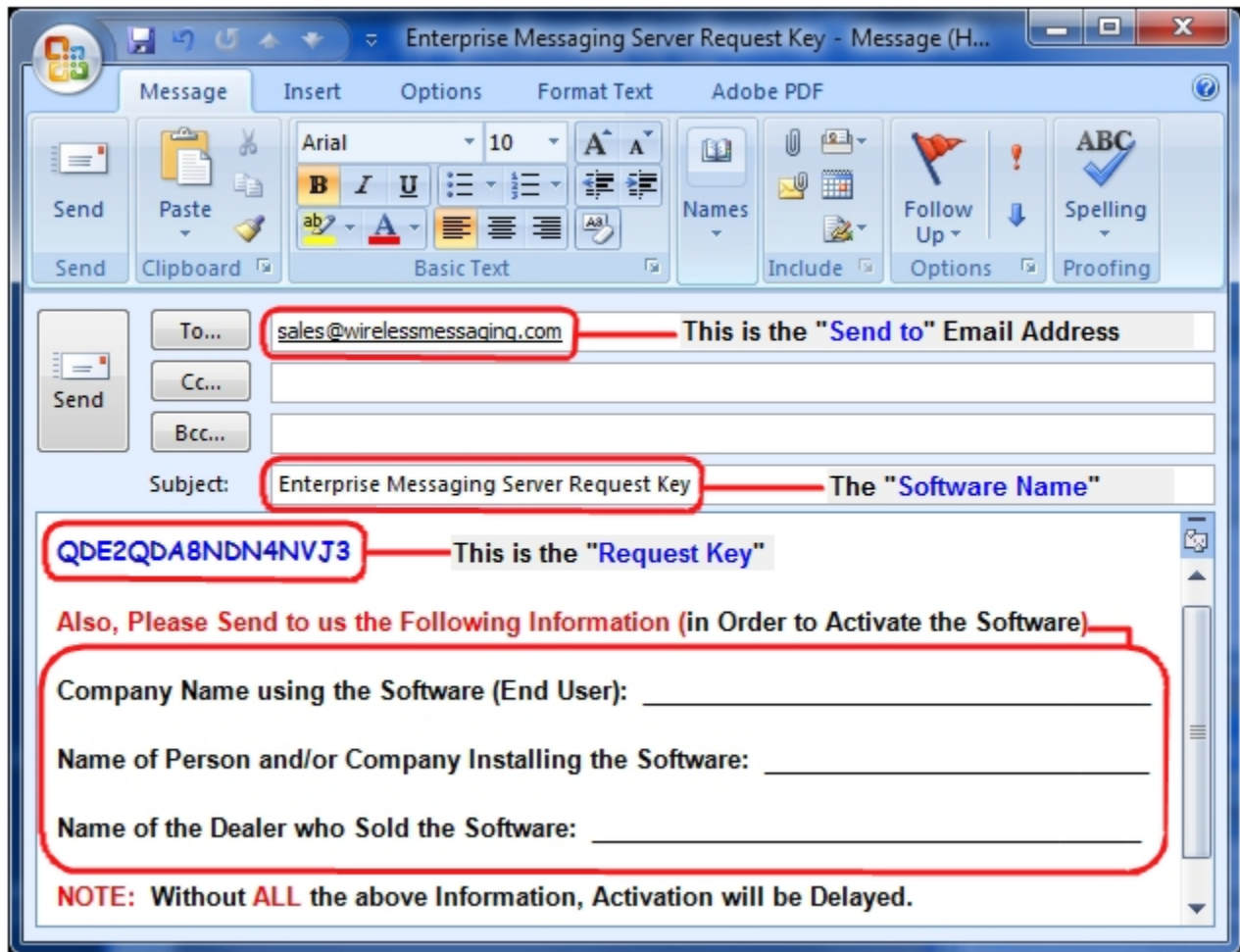


Fig. 10

NOTE 1: Include in the Body of the E-Mail: Your Company Name, Contact Name and the Name of the Company from whom the "Software was Purchased From" and send the E-Mail to us: Sales@WirelessMessaging.com

NOTE 2: Failure to Send All the Required Information will Delay sending the Activation Key. See Fig. 9

Without All the Required Information, No Key will be sent.

Registering/Activating our Software

WaveWare will send a Reply Email with the “Registration/Activation Key” for either a Trail Key or Permanent Key.

If you have not received a reply within 30 minutes, please call us at: 1.800.373.1466, and ask for Tech Support.

Copy and Paste the “Activation Key” into the “Registration Key” Field and Click “OK”. See Fig. 11

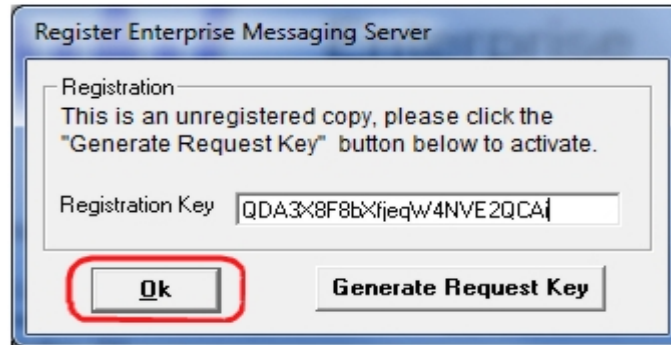


Fig. 11

You should then see: “Registration Was Successful”. Click “OK”, See Fig. 12

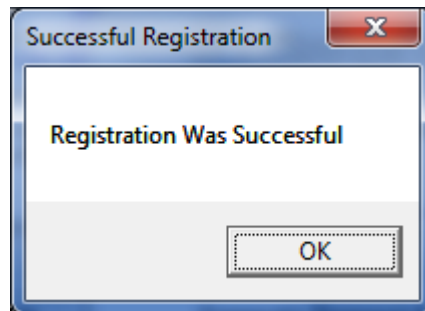


Fig. 12

This Concludes the Registration Process. Please refer to the Software Manual to continue Configuration.

If you have any Problems with the Installation or Registration or just have Questions, please Contact the Dealer from whom you have purchased the Software.

Please Note:

WaveWare Supports our Dealers and our Dealers Support their Customers.

Thank you.

Software Developed by: WaveWare Technologies, Inc.

WaveWare Technologies, Inc. 1.800.373.1466 www.WirelessMessaging.com